

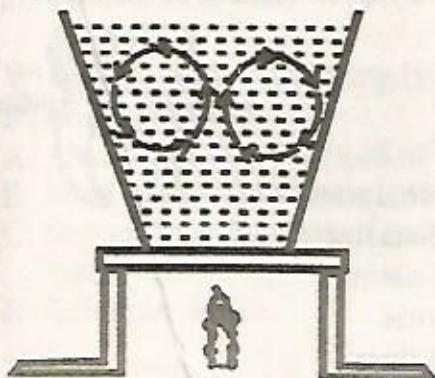


TIMER NATIONAL SERIES
EVALUATION TEST
STD 6 SCIENCE

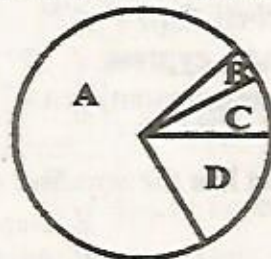
{6}

Time: 2 hrs

1. In which part of the body does ovulation take place?
A. Ovary
B. Oviduct
C. Uterus
D. Vagina
2. Which one of the food substances below help to maintain healthy teeth?
A. Chocolate
B. Cakes
C. Sugarcane
D. Biscuits
3. Animals whose bodies are covered with hair or fur also
A. give birth to live young ones.
B. have constant body temperature.
C. only live on dry land.
D. have scales on their legs.
4. The main reason why a rain gauge is dug into the ground is to
A. prevent it from harsh weather conditions.
B. reduce the amount of running water getting to it.
C. reduce the rate of evaporation.
D. prevent water from splashing to it.
5. The diagram below shows.
6. Which one of the following is not true about zero grazing?
A. Less food is wasted.
B. Less labour is required.
C. It is easy to collect manure.
D. There is less movement of animals.
7. The following are characteristics of soil;
i. Poorly drained
ii. Cracks when dry
iii. Highest capillarity
iv. Fine particles
The type of soil described above is
A. loam
B. sand
C. clay
D. silt
8. A person looks healthy and strong but medical test on HIV is positive. Which stage is he likely to be?
A. Symptomatic
B. Full blown
C. Window
D. Incubation
9. Three of the following are traditional methods of food preservation. Which one is not?
A. Use of low temperatures
B. Smoking
C. Drying
D. Refrigeration
10. The pie chart below shows composition of air.



- A. convection in liquids
B. conduction in liquids
C. boiling of water
D. radiation in liquids



- Which of the following letters is correctly matched with its use?
A. C - used in bulbs and tubes.
B. A - preserving soft drinks.
C. D - making proteins in leguminous plants.
D. B - used in germination.

11. Which one of the following is not true about nimbus clouds? They
- are found low in the sky.
 - indicate fine weather.
 - are mountaneous in appearance.
 - are dark grey in colour.

12. Which of the diseases below is a child immunised against at birth?
- Tetanus
 - Measles
 - Whooping cough
 - Tuberculosis

13. Which one of the following is not an artificial source of light?
- Stars
 - Sun
 - Moon
 - Firefly

14. Which one is not a method of grazing?
- Herding
 - Paddocking
 - Stall feeding
 - Rotational grazing

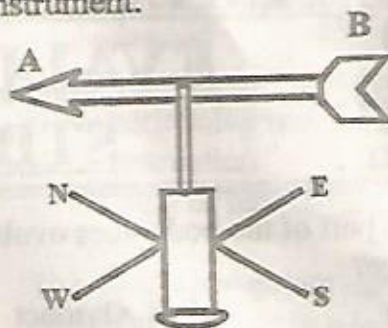
15. A child was diagnosed with the following signs and symptoms;
- Pale finger nails*
 - Dizziness*
- The child is likely to be suffering from
- anaemia
 - marasmus
 - rickets
 - kwashiokor

16. Which of the combinations below consists of non-green plants only?
- Algae, mucor, puffball
 - Yeast, lichen, fern
 - Pine, lichen, cypress
 - Puffball, mushroom, yeast

17. Which planet has the smallest orbit?
- Earth
 - Neptune
 - Mercury
 - Jupiter

18. In which part of the alimentary canal is undigested food stored before being removed from the body?
- Anus
 - Rectum
 - Stomach
 - Colon

19. The diagram below shows a weather instrument.



- Which statement is not true about it?
- The wind is blowing towards point A.
 - The size of the tail should be twice the arrow head.
 - The head points where the wind is blowing from.
 - It should not be firmly fixed to allow free rotation.

20. A process through which white light is split is known as
- spectrum
 - reflection
 - refraction
 - dispersion

21. Mass is defined as
- the pull of gravity on a body.
 - the quantity of matter in a substance.
 - the volume of matter in a substance.
 - the heaviness of an object.

22. Which of the following parts of a flower protects it during the bud stage?
- Petal
 - Stigma
 - Sepal
 - Ovary

23. Below is a representation of a human tooth.



- The problem shown is
- dental carries
 - dental cavity
 - gingivitis
 - dental floss

24. Landslide is a form of _____ erosion.
- gully
 - sheet
 - splash
 - rill

25. The following are characteristics of a certain weed;

- i. Has yellow fruits when ripe.
- ii. Has purple flowers.
- iii. Leaves and stems have thorns.

The weed described above is

- A. thorn apple
- B. blackjack
- C. sodom apple
- D. mexican marigold

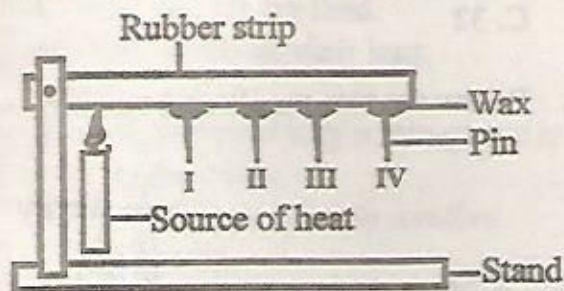
26. Which of the following ways is an artificial way of lighting a house? Using

- A. electricity
- B. transparent windows
- C. sky lights
- D. frosted glass

27. Sound travels fastest in which medium?

- A. Liquid
- B. Gas
- C. Vacuum
- D. Solid

28. Below is an experiment that was done to investigate a certain property of matter.



What conclusion was made?

- A. The pins started falling one after another.
- B. All the pins fell off at the same time.
- C. Rubber is a poor conductor of heat.
- D. Pin I fell off first.

29. Which one of the following is not a function of roots?

- A. Absorption of water and mineral salts.
- B. Food storage in some plants.
- C. Supporting the plants firmly in the soil.
- D. Transpiration.

30. Which one of the conditions below is not necessary for plants to make their own food?

- A. Carbon dioxide
- B. Oxygen
- C. Chlorophyll
- D. Sunlight

31. The type of soil erosion where small holes are formed in the soil is called

- A. splash
- B. rill
- C. gully
- D. sheet

32. Which one of the following animal feeds is a concentrate?

- A. Lucern
- B. Silage
- C. Pasture
- D. Dairy meal

33. A needle sinks in water while a sufuria floats because of difference in

- A. size
- B. material
- C. shape
- D. weight

34. A tiny hole through which water and air enters the seed is known as

- A. testa
- B. hilum
- C. cotyledon
- D. micropyle

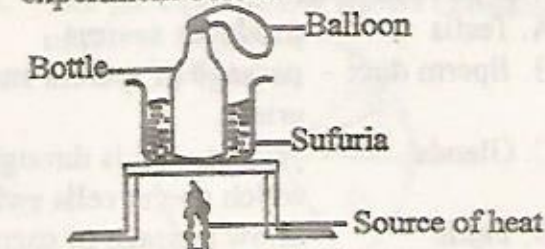
35. Which one of the following is a recreational use of water?

- A. Boat racing
- B. Cooling machines
- C. Mixing chemicals
- D. Watering crops

36. The following are reasons for lighting a house except;

- A. to discourage pests.
- B. to warm the house.
- C. to read comfortably.
- D. for safety.

37. Pupils from Kwaya school did the experiment below.



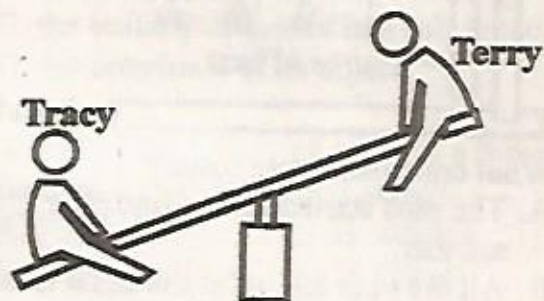
After heating for sometime what observation did they make?

- A. The bottle crushed into small pieces.
- B. The level of water in the sufuria reduced.
- C. The balloon got inflated.
- D. Water got into the bottle.

38. A beam balance is used for
 A. measuring the weight of an object.
 B. measuring the volume of an object.
 C. comparing heights of two objects.
 D. comparing the mass of two objects.
39. Materials that do not allow light to pass through are called
 A. translucent B. transparent
 C. opaque D. spectrum
40. The transfer of pollen grains from one flower to another flower on a different plant of the same kind is known as
 A. cross pollination
 B. self pollination
 C. ovulation
 D. fertilisation
41. Which two processes requires loss of heat to the surrounding?
 A. Freezing and condensation
 B. Boiling and condensation
 C. Evaporation and melting
 D. Melting and freezing
42. Which one of the following consists of a balanced diet?
 A. Ugali, meat and milk
 B. Rice, chips and juice
 C. Green grams, milk and rice
 D. Chicken, chapati and chips
43. Which of the following parts of a male reproductive system is wrongly matched with its functions?
 A. Testis - produces sperms
 B. Sperm duct - passage of sperms and urine
 C. Glands - produce fluids through which sperm cells swim
 D. Penis - allow passage of sperms
44. Which of the following diseases is not communicable?
 A. Malaria B. Typhoid
 C. Tuberculosis D. Tetanus

45. Which of the following physical changes occur to both boys and girls during adolescence?
 A. Deepening of the voice
 B. Experiencing wet dreams
 C. Menstruation
 D. Growth of hair in pubic areas
46. The most appropriate method of controlling weeds in a large farm is by
 A. uprooting
 B. spraying with chemicals
 C. slashing
 D. digging them out
47. HIV stands for
 A. Human Immune Virus
 B. Human Immunity Virus
 C. Human Immunodeficiency Virus
 D. Health Ignorance Virus
48. A human being has _____ sets of teeth.
 A. 2 B. 20
 C. 32 D. 4

49. Below are two pupils on a seesaw.



- For Tracy to balance with Terry,
 A. Terry should move closer to the pivot.
 B. Tracy should move closer to the pivot.
 C. Terry should jump up and down to increase her weight.
 D. both to remain where they are.
50. The type of soil with coarse particles
 A. has a lot of humus.
 B. drains water fastest.
 C. is the best for farming.
 D. has the highest capillarity.