



INTERNATIONAL STAR EXAMINATION DIVISION



STD 8 APRIL/ MAY ASSIGNMENT 2020

SCIENCE

Time: 1h 40mins

INSTRUCTIONS TO CANDIDATES (Please read these instructions carefully)

1. You have been given this question booklet and a separate answer sheet. The question booklet contains 50 questions.
2. Do any necessary rough work in this booklet.
3. When you have chosen your answer, mark it on the **ANSWER SHEET**, not in this question booklet.

HOW TO USE THE ANSWER SHEET

4. Use an ordinary pencil.
5. Make sure you have written on the answer sheet:

YOUR INDEX NUMBER
YOUR NAME
NAME OF YOUR SCHOOL

6. By drawing a **dark line** inside the correct numbered boxes mark your full Index Number (i.e. School Code Number and the three-figure Candidate's Number) in the grid near the top of the answer sheet.
7. Do not make any marks outside the boxes.
8. Keep the sheet as clean as possible and do not fold it.
9. For each of the questions 1 - 90 four answers are given. The answers are lettered A, B, C and D. In each case only ONE of the four answers is correct. Choose the correct answer.
10. On the answer sheet the correct answer is to be shown by drawing a **dark line** inside the box in which the letter you have chosen is written.

Example

In the Question Booklet:

On the answer sheet:

4. Which one of the following components of blood is involved in clotting after injury?
A. Plasma
B. White blood cells
C. Red blood cells
D. Platelets

The correct answer is D.

4.{A}{B}{C}{~~D~~}[8]{A}{B}{C}{~~D~~}[12]{A}{B}{C}{~~D~~}[16]{A}{B}{C}{D}[20]{A}{B}{C}{~~D~~}

In the set of boxes numbered 31, the box with the letter C printed in it is marked.

11. Your dark line **MUST** be within the box. Make your line as **DARK** as possible.
12. For each question **ONLY ONE** box is to be marked in each set of four boxes.

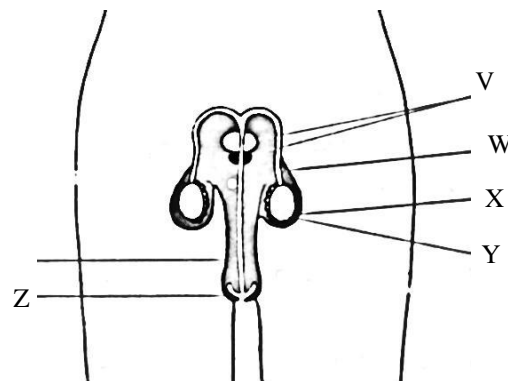
@INTERNATIONAL STAR EXAMINATION SERIES

Cell: 0723 – 871381

- Which one of the following weeds has thorns on the stem and leaves
 - Black jack
 - Oxalis
 - Mexican marigold
 - Sodom apple
- Which one of the following is a social effect of drug abuse
 - Withdrawal effects
 - Drug induced accident
 - Impaired judgments
 - Loss of memory
- Which one of the following statement is not TRUE about the first stage of HIV infection.
 - The patient test negative
 - No visible signs
 - Has AIDS
 - Can infect others without knowing
- Which one of the following parts of alimentary canal is **Not** correctly matched to its function
 - Stomach – Digestion of food
 - Small intestine- absorption of food
 - Large intestine – digestion ends there
 - Rectum- Stores indigestible solid waste

- The following are functions of the nose **EXCEPT**
 - Traps the dust
 - Warms the air
 - Absorbs the air
 - Moistens the air

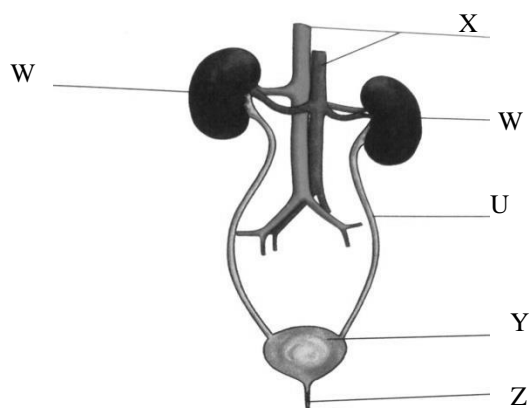
- The diagram below represents a male reproductive system



The function of the part marked X is

- Production of reproductive cells
 - Passage of urine and sperms
 - Stores eggs
 - Passage of sperms into the urethra
- Which one of the following characteristics can be used to identify incisors. presence of
 - Cusps and ridges
 - Chisel shaped
 - Long and sharp
 - Two roots

8. The diagram below represents the structure of a human kidney



Name the parts labeled U, Y and Z

- | | | |
|------------|----------|----------|
| U | Y | Z |
| A. Urethra | bladder | Ureter |
| B. Bladder | urethra | ureter |
| C. Ureter | Bladder | |
| | Urethra | |
| D. Ureter | Urethra | |
| | bladder | |

9. Anti-Measles and anti-yellow fever vaccines are given into the infant's body at the age of

- A. 6 weeks
- B. 9 months
- C. At birth
- D. 14 weeks

10. The disease that can be prevented by living in a well ventilated room is

- A. Bilharzia
- B. Malaria
- C. Tuberculosis
- D. Cholera

11. Which one of the following list consists only of legal drugs

- A. Bhang, tea, cobbler's glue
- B. Heroin ,bhang, khat
- C. Tobacco, bhang, cocaine
- D. Alcohol, khat, tobacco

12. Which one of the following groups of plants consist only of green non flowering plants

- A. Bracket tree and moss
- B. Sisal and cactus
- C. Pine and sweet potato
- D. Moss and fern

13. Plants depend on animals for

- A. Support
- B. Shelter
- C. Pollination
- D. habitat

14. Which one of the following crop pests is correctly matched to the damage it cause

Pest	damage
A. Aphids	Cut stem of seedling
B. Weaver bird	bore holes in grains
C. Stalk borer	Suck the sap
D. Weevils	bore holes in grains

15. The following describe a certain type of water.

- i. Forms scum on reaction with soap
- ii. Lather easily with soap
- iii. Forms scale on water boilers
- iv. Obtained from rain drops

The two statements that describe water that contains a lot of dissolved mineral salts are

- A. i and iii
- B. ii and iv
- C. i and iv
- D. iii and iii

16. In the solar system Saturn is found between

- A. Earth and Venus
- B. Neptune and Venus
- C. Uranus and Jupiter
- D. Jupiter and Earth

17. Which one of the following pairs of birds have their beaks adapted to the same type of feeding?

- A. Duck and chicken
- B. Eagle and hawk
- C. Hawk and duck
- D. Chicken and sunbird

18. Which one of the following is the BEST method of controlling ticks and tapeworms

- A. Dipping
- B. Deworming
- C. Rotational grazing
- D. Proper sanitation

19. Human and animal waste MAINLY pollute

- A. Air
- B. Water
- C. Crops
- D. Soil

20. Small furrows in the soil show

- A. Splash erosion
- B. Rill erosion
- C. Gully erosion
- D. Sheet erosion

21. Which one of the following statement is NOT TRUE about clay soil

- A. Retains high amount of water
- B. Cracks when dry
- C. Has fine texture
- D. Has fastest capillarity

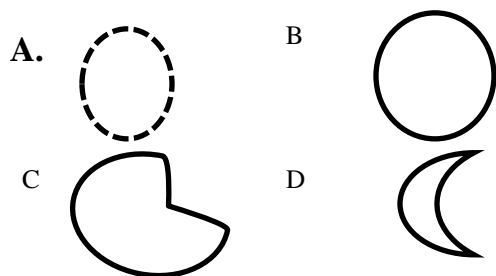
22. Which one of the following source of energy can be recycled and re-used

- A. Natural gas
- B. Kerosene
- C. Biogas
- D. Petrol

23. A child who appears weak, inactive and bones stick out is also likely to have

- A. Knock-knees
- B. Pale eyes and skin
- C. Wrinkled face
- D. Swollen limbs

24. Which one of the following diagrams represents the shape of the moon that is invisible on the earth's surface



25. The following are characteristics of a certain animal

- i. *Body covered with scales*
- ii. *Are cold blooded*
- iii. *Breathing by lungs*
- iv. *Lay fertilized eggs*

The animals described above are likely to be

- A. Frog and salamander
- B. Snake and duck
- C. Shark and lizard
- D. Lizard and tortoise

26. Blood in stool, headache and skin rashes are signs of

- A. Bilharzia
- B. Malaria
- C. Typhoid
- D. Cholera

27. Using a vacuum flask to keep liquids hot for a long time is a way of conserving energy by

- A. Using energy sparingly
- B. Using energy efficient devices
- C. Using energy from underground
- D. Using renewable sources of energy

28. Which one of the following internal parasites attacks both fish and poultry?

- A. Liver flukes
- B. Round worms
- C. Lung worm
- D. Tape worm

29. Which one of the following pairs of sources of electricity uses chemical

- A. Dynamo and solar panel
- B. Dry cell and car battery
- C. Geothermal generator
- D. Petrol generator and solar panel

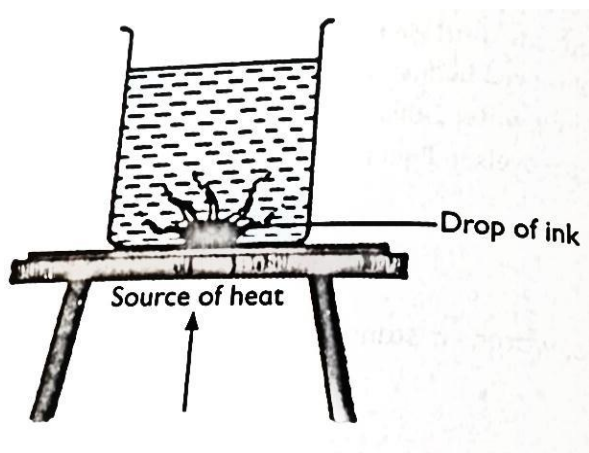
30. Which one of the following is NOT a use of gas that occupies 0.03% of the air?

- A. Preserving soft drinks
- B. Fixing soil nutrients
- C. Putting out fire
- D. Making food for the plants

31. Which one of the following pairs consist only of material that allow small amount of light to pass through

- A. Mirror and frosted glass
- B. Sky lights and waxed paper
- C. Kerosene and clear glass
- D. Mirror and air

32. The diagram below shows a set up used by pupil to demonstrate a certain property of matter



The drop of ink was used to

- A. Cause water to expand
 - B. Show convectional currents
 - C. Heat the water
 - D. Colour the water
33. Which one of the following DOES NOT work the same as inclined plane?
- A. ladder
 - B. contour road
 - C. flag post
 - D. Stair case
34. Which one of the following practices will NOT help to control water pollution
- A. Using organic manure
 - B. Planting Napier grass along river banks
 - C. Recycling dirty water
 - D. Burning wastes in dumpsites

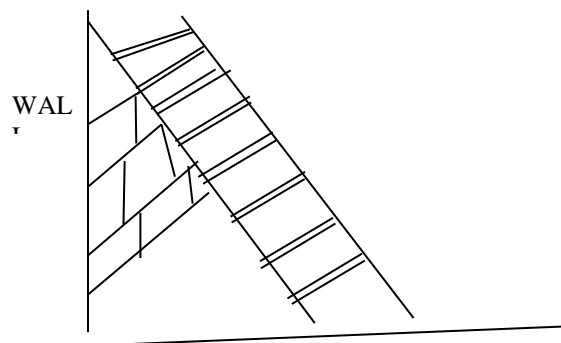
35. Energy transformation that takes place in a speaker of a radio is

- A. chemical - magnetic - sound
- B. magnetic - kinetic - sound
- C. Chemical - electrical - sound
- D. Kinetic - magnetic - sound

36. Which one of the following is NOT away of conserving soil

- A. Treating inorganic waste
- B. Practising contour farming
- C. Burning plant wastes
- D. On-site treatment of waste

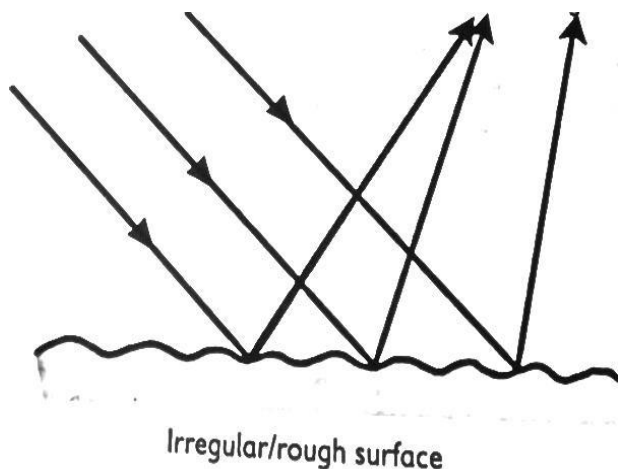
37. The diagram below represents a lever in use



It makes the work easier by

- A. Reducing friction
- B. Increasing the effort distance
- C. Increasing the slope
- D. Changing the direction of force

38. Std. 6 pupils were investigating property of light as shown below



The property investigated is likely to be

- A. Dispersion
- B. Spectrum
- C. Refraction
- D. Reflection

39. Which one of the following is

CORRECTLY matched to it's group

magnetic

non-magnetic

- | | |
|--------------|-----------|
| A. Chromium | Aluminium |
| B. Copper | Steel |
| C. Iron | Steel |
| D. Aluminium | copper |

40. The BEST method of separating wheat

flour and husks is by

- A. Winnowing
- B. Picking
- C. Sieving
- D. Filtering

41. Which one the following is the MAIN reason why an expectant mother should avoid too much fatty foods. It

- A. causes constipation
- B. Causes heartburn and nausea
- C. Help in egestion
- D. Makes the baby fat

42. Which one of the following ways can be used to prevent water pollution as well as conserve water?

- A. harvesting rain water
- B. recycling
- C. Re-use
- D. Using sprinkler irrigation

43. In order to maintain strong healthy teeth, one should

- A. Take plenty of sugary foods
- B. Using tooth pick
- C. drinking milk
- D. Opening bottles top with teeth

44. Three of the following are ways of reducing friction **EXCEPT**

- A. Streamlining
- B. Treading
- C. Using rollers
- D. Lubricating

45. The **BEST** method of food preservation in maintaining freshness of food is

- A. Canning
- B. Drying
- C. Refrigerating
- D. Smoking

46. The diagram below represents a simple machine



The 2nd procedure when assembling the material for making it is

- A. Suspend two equal tins on each arm
- B. Make the base, support and arm
- C. Suspend the arm to find the balancing point and mark
- D. Fix the arm to the support and balance.

47. Which one of the following is an artificial way of lighting a house?

- A. Opening windows
- B. Using traditional lamps
- C. Using translucent roofing
- D. Using transparent glass windows

48. The following are features of a certain cloud

- I. Look like mountain
- II. Spreads all over the sky
- III. Found low in the sky

The cloud described above can also

- A. Cause heavy rainfalls
- B. Increase temperature
- C. Cause fine weather
- D. Change the direction of wind

49. Which one of the following is not a sign of food poisoning?

- A. Dizziness
- B. Vomiting
- C. Diarrhoea
- D. Skin rashes

50. Plants that have slippery surfaces on their leaves are likely to?

- A. Reflect light and heat
- B. Allow more water to transpire
- C. Trap any moist air
- D. Increase transpiration