

# STANDARD 8 – CODE 001 – 2020

## SCIENCE

Time: 1 hour 40 minutes

### READ THESE INSTRUCTIONS CAREFULLY

1. You have been given this question booklet and separate answer sheet. The question booklet contains 50 questions.
2. Do any necessary rough work on this booklet.
3. When you have chosen your answer, mark it on the **answer sheet**, not in this question booklet.

### HOW TO USE THE ANSWER SHEET

4. Use only an ordinary pencil
5. Make sure you have written on the answer sheet:  
Your Index Number  
Your Name  
Name of Your School
6. By drawing a **dark line** inside the correct numbered boxes mark your full Index Number (i.e. School Code Number and the three-figure Candidate's Number) in the grid near the top of the answer sheet.
7. Do not make any marks outside the boxes
8. Keep the sheet as clean as possible and not fold it.
9. For each of the questions 1 – 50 four answers are given. The answers are lettered A, B, C and D. in each case only **one** of the four answers is correct. Choose the correct answer.
10. On the answer sheet the correct answer is to be shown by drawing a **dark line** inside the box in which the letter you have chosen is written.

#### Example

##### In the Question Booklet:

4. Which one of the following components of blood is involved in clotting of blood after injury?

- A. Plasma
- B. White blood cells
- C. Red blood cells
- D. Platelets

The correct answer is D

##### On the Answer Sheet:

**4** [A] [B] [C] **D**   **14** [A] [B] [C] [D]   **24** [A] [B] [C] [D]   **34** [A] [B] [C] [D]   **44** [A] [B] [C] [D]

In the set of boxes numbered 4, the box with letter D printed in it is marked.

11. Your **dark line must** be within the box.
12. For each question **only one** box is to be marked in each set of four boxes.

1. Which one of the following clouds are found high in the sky and have a flat base?

- A. Nimbus
- B. Cumulus
- C. Stratus
- D. Cirrus

2. Draining stagnant water can help prevent the spread of:

- A. typhoid and malaria
- B. cholera and bilharzia
- C. typhoid and cholera
- D. bilharzia

3. Convection is a mode of heat transfer in:

- A. liquids only
- B. gases only
- C. liquids and solids
- D. liquids and gases

4. Which of the following is a social effect of drug abuse?

- A. Drug induced accidents
- B. Withdrawal
- C. Addiction
- D. Memory loss

5. The component of blood that helps in clotting is:

- A. plasma
- B. platelets
- C. red blood cells
- D. white blood cells

6. The type of animal feed grown, cut and fed to animals is known as

- A. pasture
- B. concentrate
- C. fodder
- D. pasture

7. Which of the following is not a source of current electricity?

- A. Windmills
- B. Car battery
- C. Geothermal wells
- D. Water dams

8. The processes involved in changing ice to vapour are:

- A. melting and condensation
- B. evaporation and condensation
- C. freezing and evaporation
- D. melting and evaporation

9. Rays of Light appear bend when they move from the transparent medium to another due to

- A. bouncing
- B. dispersion
- C. refraction
- D. splitting

10. The component of air used in photosynthesis is also used in:

- A. germination
- B. fire extinguisher
- C. light bulbs
- D. making proteins

11. Which of the following is a biotic component of the environment?

- A. Air
- B. Plants
- C. Soil
- D. Water

12. Children who suffer from Kwashiorkor and anaemia lack of \_\_\_\_\_ and \_\_\_\_\_ respectively.

- A. iron and proteins
- B. calcium and iron
- C. proteins and iron
- D. enough food and iron



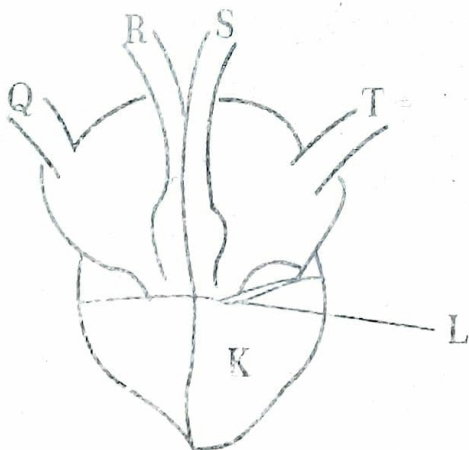
13. The pistil of a flower consist of
- petals, stigma, style and ovary
  - style, stigma, ovary and ovules
  - filament, pollen grains and anthers
  - sepals, petals, style and ovary

14. Plants depend of each other following except?
- Food
  - Support
  - Shade
  - Habitat

15. Which of the following crop pests cuts the stems of young plants?
- Cutworms
  - Stalk borer
  - Aphids
  - Termites

16. Which of the following methods of controlling animal parasites can be used for both ticks and liver flukes?
- Deworming
  - Spraying
  - Rotational grazing
  - Dipping

Use the diagram to answer questions 17 to 19.



17. The two vessels that carry bright red blood are labeled?
- Q, R
  - Q, T
  - S, T
  - R, S

18. The features marked L are useful because they
- allow backflow of blood
  - help in blood clotting
  - help in pumping of blood
  - prevent blood from flowing backwards

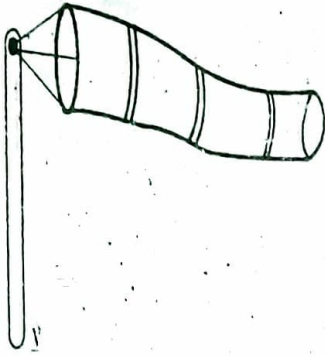
19. The chamber marked K has thick muscle wall mainly because:
- it receives a lot of blood
  - it pumps blood to all parts of the body
  - it receives deoxygenated blood
  - it pumps oxygenated blood

20. Which of the following drugs is prohibited in Kenya?
- Bhang
  - Alcohol
  - Miraa
  - Tobacco

21. Which method of preserving food will keep fish fresh for a long time?
- Salting
  - Freezing
  - Drying
  - Smoking

22. The soil that cracks when dry also:
- has large air spaces
  - is sticky when wet
  - is good for farming
  - has a good drainage

23. Which of the following is true about the instrument below?



- A. It is used to tell the speed of wind
  - B. It points where the wind is blowing
  - C. It has two open ends
  - D. It should be kept under shade
24. Which of the following shows using water sparingly?
- A. Harvesting rain water
  - B. Using sprinkler irrigation
  - C. Repairing leaking pipes and tanks
  - D. Using water that has been used to wash clothes to mop the floor
25. Which of the following is a myth about HIV/AIDS?
- A. AIDS has a cure.
  - B. HIV/AIDS is spread through sexual intercourse
  - C. HIV/AIDS patients are always thin
  - D. HIV/AIDS can affect anyone
26. All the following are major nutrients required by plants except?
- A. Manganese
  - B. Phosphorus
  - C. Nitrogen
  - D. Potassium
27. The most abundant component of blood is:
- A. platelets
  - B. plasma
  - C. red blood cells
  - D. white blood cells

28. Which of the following groups of crops are fibre crops?

- A. Beans, Peas, Maize
- B. Cotton, sisal, flax
- C. Potatoes, Cassava, Carrots
- D. Maize, wheat, rice

29. Which one of the following is not found in tobacco smoke?

- A. Caffeine
- B. Nicotine
- C. Tar
- D. Carbon monoxide

30. Which of the following cannot be measured using a spring balance?

- A. Weight
- B. Friction
- C. Magnetism
- D. Mass

31. The following small animals belong to the same group except?

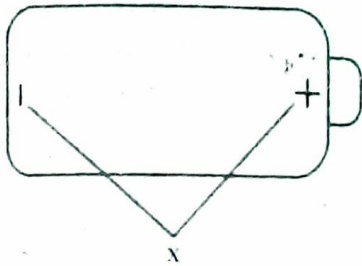
- A. Flea
- B. Mite
- C. Spider
- D. Tick

32. All the following are characteristics of an insect pollinated flower except?

- A. Have scent
- B. Produce nectar
- C. Feathery stigma
- D. Brightly coloured petals



33. The two parts of a dry cell labelled x are called?



- A. Poles
- B. Terminals
- C. Circuits
- D. Ends

34. The following are physical changes in both boys and girls during adolescent except?

- A. Production of sex cells
- B. Broadening of hips
- C. Pimples may appear
- D. Growth of public hair

35. In female human beings ovulation happens in the:

- A. oviduct
- B. ovary
- C. uterus
- D. cervix

36. The main vein is the

- A. pulmonary vein
- B. aorta
- C. venacava
- D. pulmonary artery

37. Which one of the following has definite volume and mass only?

- A. Wood
- B. Water
- C. Air
- D. Vapour

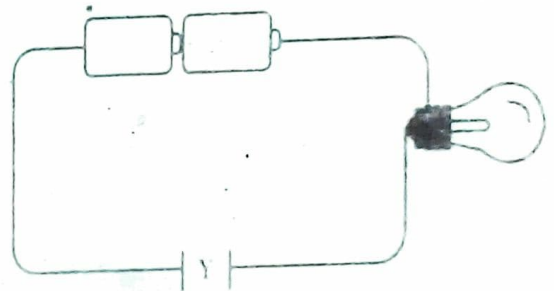
38. Which of the following materials is opaque?

- A. Kerosene
- B. Windscreen
- C. Mirror
- D. Frosted glass

39. The type of soil erosion that occurs on animal paths is:

- A. rill erosion
- B. sheet erosion
- C. splash erosion
- D. gulley erosion

40. The diagram below represents a simple circuit. Which of the following materials cannot make the bulb to light when placed at point Y?



- A. Copper
- B. Razor blade
- C. Graphite
- D. Glass

41. Which of the following stores food in the stem?

- A. Cassava
- B. Irish potato
- C. Carrot
- D. Arrow root

42. The gas that is used by legumes to make proteins is approximately:

- A. 78%
- B. 0.03%
- C. 21%
- D. 0.97%

43. Which of the following is not a water pollutant?

- A. Raw sewage
- B. Acid rain
- C. Oil spills
- D. Tobacco smoking

44. Which of the following is not a special sound?

- A. Car hooting
- B. Fire siren
- C. Baby crying
- D. Bell ringing

45. All the following are characteristics of amphibians except?

- A. Have external fertilization
- B. Have a backbone
- C. Have scales on their bodies
- D. Lay eggs

46. Which of the following is correctly matched with their products?

- A. Sheep - mutton and mohair
- B. Cow - beef and mohair
- C. Goat - mutton and mohair
- D. Poultry - egg and wool

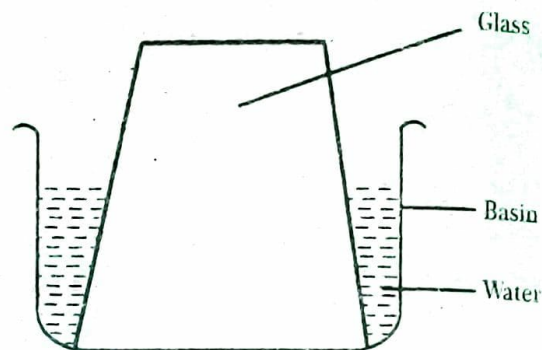
47. Which of the following can be attracted by a magnet?

- A. Plasmodium
- B. Aluminum rod
- C. Iron nails
- D. Cobalt filings

48. Malaria is a communicable disease caused by:

- A. plasmodium
- B. female anopheles
- C. stagnant water
- D. mosquito

49. The water did not enter the glass because:



- A. air exerts pressure
- B. water is heavier
- C. air occupies space
- D. air expands on heating

50. The best method of controlling weeds is:

- A. digging them out
- B. spraying with herbicides
- C. uprooting them
- D. burning them