



Ɔvuku ya ngewa

1



★ Kĩla Kĩtumaa Ndunduli
Ɔũlũka Ūtukũ

★ Kavalũkũ na Mbiti



Primary Math and Reading (PRIMR) Initiative

Kikamba

Művea

- Ministry of Education, Science and Technology (MoEST)
- UK Department for International Development (DFID)
- RTI International
- SIL LEAD

Kīla Kītumaa Ndunduli Īūlūka Ūtukū

Mūandīki: **Angelina Kīoko**

Mūsoli: **Simon Ndonge**

Kuma tene,
Nyūnyi
na nyamū
ila ingī
syoonaa
ndunduli
ta mbūī
mūno.



Vala ve ĩkoani ndunduli nīyo
yeetawa ĩkasilany'e.



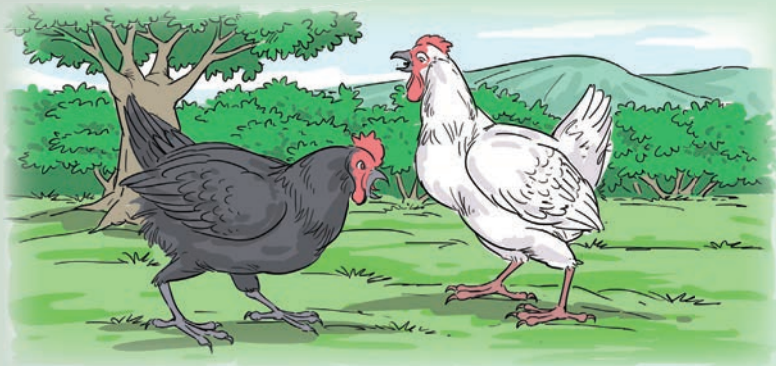


Mũthenya ũmwe mbūkũ
nĩyaendie kwa ndunduli na
yamĩkũlya ta ũũ, “Mũnene,
nĩenda ũndavye ĩla mbũĩ kwĩ
ĩngĩ katĩ wa ngũkũ nzaũ na
ngũkũ nziũ?”

Mūsili ndunduli asūngīa asya,
“Ūsu nī ūndū mūvūthū. Ngūkū
īla nziū nīyo mbūī. Nūndū
nītonya ūlekya ītumbī yeū na
ngūkū nzaū nditonya kūlekya
ītumbī yiū.”

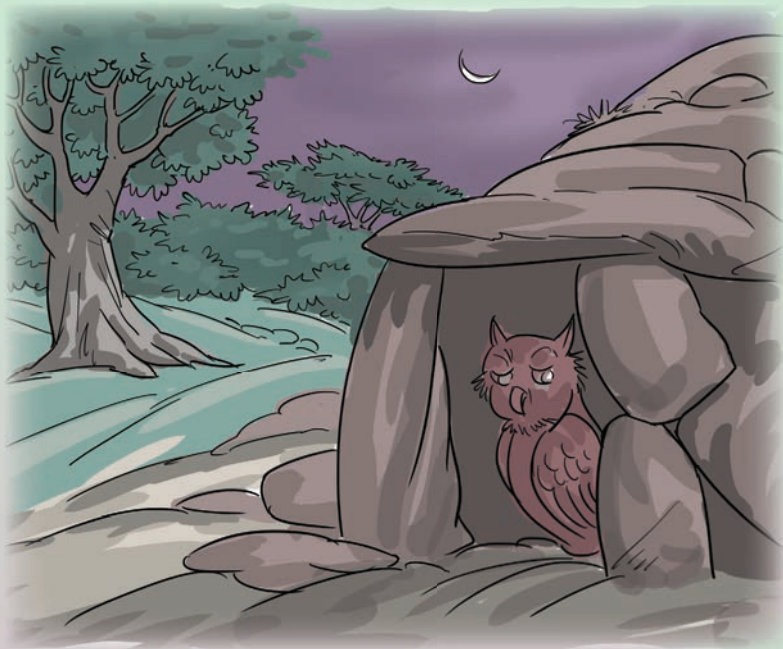
Mūsili Ndunduli niwatumie
mbūkū īkamanthe ngūkū nzaū
na nziū.

Syavika nīsyatatie ūlekya
matumbī syaemwa.



“Nūseo mūno, mūsili,” Mbūkū yamwīa, “īndī eethīwa ũĩ waku wīana ũu, we nūtonya ũlekya ĩtumbĩ yiũ?”

“Nditonya nīkī?” Mūsili ndunduli amūkūlya. Na ndunduli yathi ngunganĩ kūlekya ĩtumbĩ yiũ.



Yathi yalekya ãtumbĩ na yeethĩa
nĩ yeũ. Kwa ũu yasonoka na
yalika kũkĩa kwonana na nyamũ
ila ingĩ.

Kĩu nĩkyo kĩtumaa ndunduli
ĩtaumaala mũthenya. Yumaalaa
ũtukũ katĩ.

Mokūlyo

1. Nūū ũla weetawa vala ve makoani?
2. Ni ngūkū yīva ĩla yaĩ mbūĩ kwĩ ila ĩngĩ?
3. Ndunduli yaendie va kūlekya ĩtumbĩ?
4. Nĩ kyaũ kītumaa ndunduli ĩtaumaala mūthenya?
5. Ngūkū nziũ nĩtonya kūlekya ĩtumbĩ yiũ?

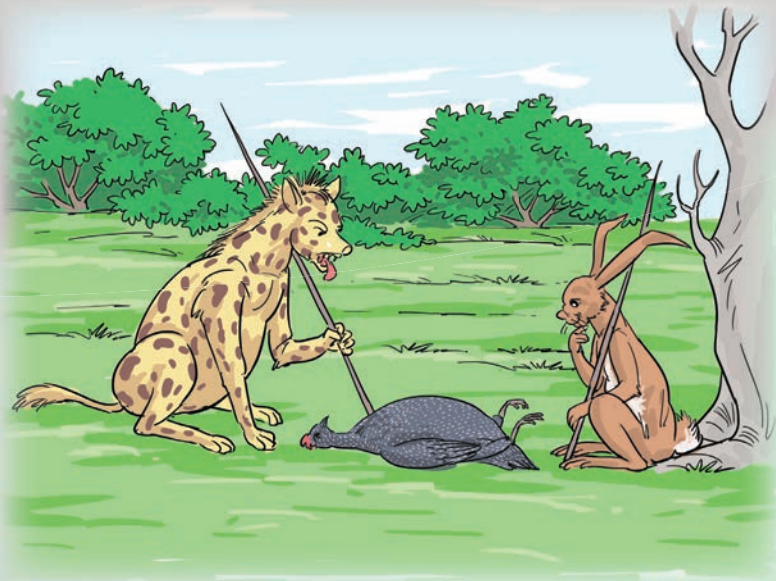
Kavalūkū na Mbiti

Mūandīki: **Anne M. Nguli**

Mūsoli: **Simon Ndonye**

Mūthenya ūmwe Kavalūkū na
Mbiti maendie kūsyīma.

Na mooaa nganga nene.





Īndĩ menũka meethĩa kũte
kĩw'ũ.

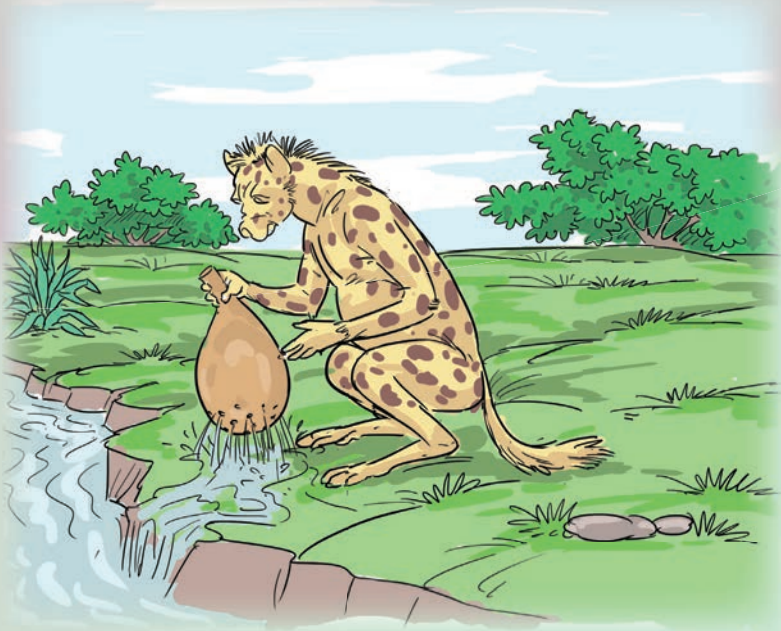
Kavalũkũ eea Mbiti athi akaute
kĩw'ũ ũsĩnĩ.

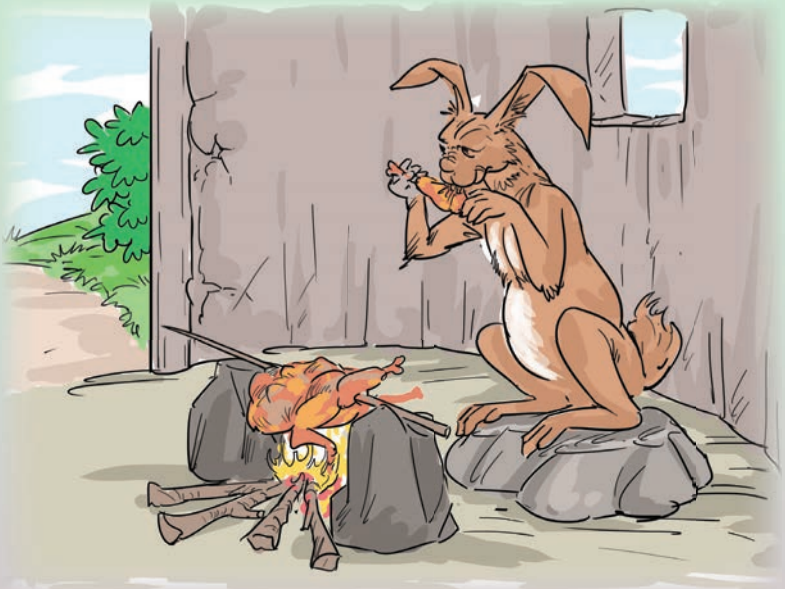
Na amũnenga kĩkuu kĩtonyange
maima ĩtina.

Nūndū Mbiti aĩ mūtumanu alea
kwona maima.

Na athi ũsĩnĩ ambĩlĩĩlya kūtavĩĩa
kĩw'ũ kĩkuunĩ.

Ĩndĩ Mbiti atavĩĩie kĩw'ũ kĩkuunĩ
okĩtĩkĩte nthĩ.





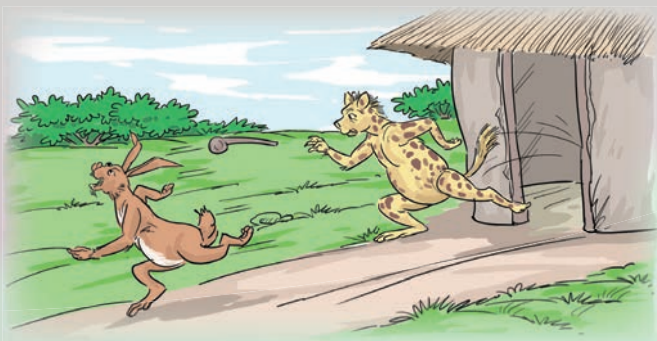
Nake Kavalūkū eeta mbiti
akalaate kīw'ū nganga
ndīkaūngūe.

Īndī mbiti aendeea kūutīia
kīkuu kītekusūa.

Kavalūkū avīvya nganga na aya
yonthē e weka.

Yĩla mbiti yesie kũnoa nĩ kũutĩia
kĩkuu kĩtekũsũa yasyoka vala ve
kavalũkũ ĩthatĩte vyũ.

Yavika Kavalũkũ amwĩa, “Yu
na nĩtindie ngwĩtĩte walea
ũsembya kĩw’ũ, nganga
ndĩũngũie vyũ!”



Mbiti eew’a ũu oosa nzũma
akũne kavalũkũ nake Kavalũkũ
asemba.

Na ĩndĩ ndũũ yoo yakw’a.



Mokũlyo

1. Kavalukũ atumie mbiti kwĩka ata?
2. Kavalũkũ eekie ata?
3. Kavalũkũ eeie mbiti ata alea kwĩthĩa nyama?
4. Ndũũ ya kavalũkũ na mbiti yakwie nĩkĩ?

★ Kīla Kītumaa Ndunduli Īlūka Ūtukū

★ Kavalūkū na Mbiti

Mavuku ma PRIMR maandikitwe kwa nzīa yī mwanya nī kana matetheesye syana sya kīlasi kya mbee na kya kelī mendeewe nī kūneena, kūsoma na kūandika kīkamba.

Ngewa ila syī mavukuni aa nīsyautetheesya syana syende kūsoma kīkamba nza wa kīlasi na kūlilikana kīla masoma. Mavuku aa nīmailite kwa asomi ma kīkamba kwa ūndū maandikitwe matetheesye ūmanyisyani wa kīthyomo kya kīkamba.

Kwīanisya maundu aa oonthe, ngewa ila syi mavukuni aa nīsuanite:

- Kūtūmia kīthyomo kīvuthu na kīla kīna mīsoa mīkuvi.
- Mavisa mena langi mūseo na maitavanitye ngewa yonthe ĩndi matūmiitwe kunenga syana mea ma kwenda kūsoma kīla kī ngewani ĩsu.
- Kīthyomo kīvuthu kwa kūelewa ĩndi kītuma syana syi sily'a muno yīlū wa kila ma soma.

Mavuku ala angī nī:

- *Kīla Kītumaa Ndunduli Īlūka Ūtukū na Kavalūkū na Mbiti*
- *Kīmena kya Ngūkū na Ndiū na Wambūa na Nyūnyi*
- *Kūkūaniwà Īkwasi na Waliku na Ūwau wa Mūthelo*
- *Mbiti Īendaa Īithua Nīkī? na Nguu na Ndiū*
- *Mūeni na Katoonu na Kīmeu na Kasūkū*