

FORM ONE

MARKING SCHEME

TERM 3, 2023

1.

(a) Name three causes of syntax errors

- Misspelling of user defined words and reserved words
- Improper punctuation
- Grammatical mistakes
- Improper naming of variables

Award 1 mark each max 3

(b) Define the following terms as used in Computer Programming

i. Machine dependent

- Means that a program cannot be moved or transferred and used in another machine except the one it was designed for

ii. Bug

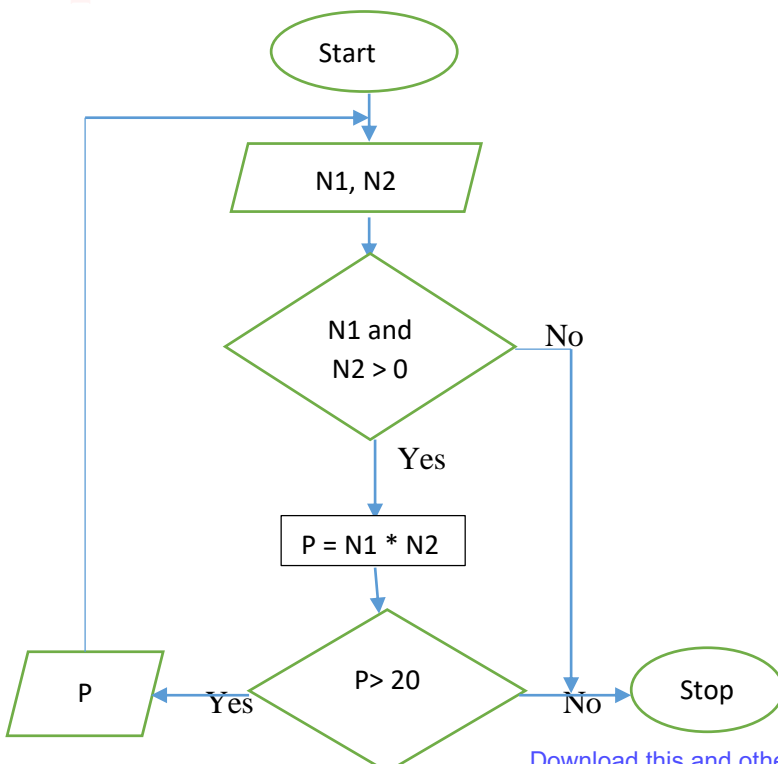
- It simply refers to a computer error

Award 2marks each max 4

(c) Study the Pseudo code below and answer the questions that follows.

Begin
 Input Y, X
 Check if Y and X > 0 Then else go to step 9
 Multiply Y and X
 Is product > 20 then?
 Display Product
 Repeat step 2, 3,4,5,6
 Else go step 9
 Stop

i. Draw a flowchart for the pseudo code above



Start 1mark
 Stop 1mark
 Input N1,N2 1mark
 N1and N2 >0 1mark
 P=N1*N2 1mark
 P>20 1mark
 Display P 1mark
 Logic 1mark

17.

(a) Study the table below and answer the questions that follow

	A	B	C	D	E	F	G
1	Product ID	Product Name	Received Quantity	Sold Quantity	Balance Stock	Unit Price	Total
2	PW00012	Ball	1000	300	700	60	
3	PW00023	Ruler	200	150	50	50	
4	PW00045	Pen	130	130	0	10	
5	PW00029	Bread	400	200	200	50	
	GRAND TOTAL						

(i) Write down the formula that Calculate the balance stock

- =C2-D2

Award 2 marks max 2

Calculate the Total cost

- =D2*F2 / Product (D2 , F2)

Award 2 marks max 2

(ii) Given that customers who purchased Rulers were allowed 10% trade discount write a formula that would be used to get the Total cost (2mark)

- =0.9(F3*D3)

Award 2marks max 2

(iii) Use named reference to calculate the Grand Total

- Rename cells (G2:G5) as total
- =SUM (total)

Award 1 mark each max 2

(b) State two differences between DOS and Windows based Operating system

DOS	Window-based operating system
▪ Requires less memory	▪ Requires high memory
▪ Command is typed at the command prompt	▪ Command is selected on an icon on the screen
▪ Requires a screen of low resolution	▪ Requires screen of high resolution
▪ Execute faster	▪ Execute slowly

max 4

(c) State three reasons why computer technicians prefer using the command line operating system when troubleshooting a computer

- Work well with screens of low resolution
- Executed very fast
- Requires low memory

Award 1 mark each max 3

18.

(a) List two types of domain names given to institutions of learning

- .ac
- .sc
- .edu

Award 1 mark each max 2

(b) Explain the function of each button on the navigation toolbar of a web browser

(i) History

- Provides a list of sites visited by the user

(ii) Home

- Takes the user to the homepage of the web browser

(iii) Download

- Provides a list of files downloaded from the internet

Award 1 mark each max 3

(c) Peter Kenneth bought a PC for his personal use at home. He wanted to do online writing at home to earn a living but there was no internet connectivity at home. Mention three internet connectivity requirement Peter Kenneth need to consider to get full internet connectivity

- Internet service provider
- Transmission media
- MODEM
- Internet software

Award 1 mark each max 3

(d) Give three reasons to justify why companies like Alibaba, Kilimall, Jumia, Copia and Masoko prefer selling their products on e-commerce platforms.

- Provides a wide range of products to the user
- Cost effective since the overhead cost is low
- Affordable advertisement
- Flexible in terms of sales

Award 1 mark each max 3

(e) Describe three factors to consider when choosing a file organization method

- Frequency of update: A file that needs to be updated every now and then needs an organization method that will allow easy retrieval of information and ease of updating, example of such a file is the transaction file
- File access method: Definitely different files have different methods of being accessed, example a reference file is accessed using random method for easy retrieval of data.
- Cost it is essential that a cost benefit analysis be conducted because different files will require different cost
- Storage media –Different file design use different media

Award 1 mark each max 2

(f) State two challenges facing electronic data processing modes in the current society

- Security threats
- It is power dependent
- Lack of legal frameworks
- Lack of ICT knowhow

Award 1 mark each max 2

19.

(a) Convert the following numbers

i. 7.5625_{10} to Binary

Whole number part

$7=111_2$ 1mark

Fraction part

$0.5625 \times 2 = 1.125$

$0.125 \times 2 = 0.25$

$0.25 \times 2 = 0.5$



.....1mark

$$0.5 * 2 = 1.0$$

$$= 0.1001_2 \dots\dots\dots 1 \text{ mark}$$

$$\text{Ans} = 111.1001_2 \text{ 1 mark } \dots\dots\dots 1 \text{ mark}$$

ii. D D F F 3 4
D D F F 3 4

D	D	F	F	3	4
13	13	15	15	3	4

