

Name..... Adm. No..... Class:

Signature.....

Date.....

443/2
AGRICULTURE
PAPER 2
JUNE/JULY - 2021
2 HOURS

MOKASA JOINT EVALUATION EXAMINATION

443/2
AGRICULTURE
PAPER 2
JUNE/JULY - 2021
2 HOURS

INSTRUCTIONS TO CANDIDATES

1. Write your name and index number in the spaces provided above.
2. Sign and write the date of examination in the spaces provided above.
3. This paper consists of three sections **A**, **B** and **C**.
4. Answer **all** questions in Section **A** and **B**
5. Answer any **two** questions from Section **C**
6. Answer to **ALL** questions **MUST** be written in this booklet.

FOR EXAMINER'S USE ONLY

SECTION	QUESTIONS	MAXIMUM SCORE	CANDIDATE'S SCORE
A	1 – 16	30	
B	17 – 20	20	
C		20	
		20	
	TOTAL SCORE	90	

SECTION A: (30 MARKS)

Answer ALL questions in this section in the spaces provided.

1. State **two** importance of good ventilation in animal houses. (1 mark)
.....
.....
2. Outline **four** factors that affect the digestibility of a feed (2 marks)
.....
.....
.....
3. List **four** signs that shows a rabbit doe is about to give birth (2 marks)
.....
.....
.....
4. Explain the meaning of the following terms used in livestock production (2 marks)
 - a) Chick
.....
 - b) Gilt
.....
 - c) Heterosis
.....
 - d) Kindling
.....
5. Give **four** maintenance measures for a crosscut saw. (2 marks)
.....
.....
.....
6. Name **two** tools used for checking the verticalness of a wall when laying bricks during construction. (1 mark)
.....

-
7. Give **four** reasons why a farmer should use concrete floors for dairy sheds. (2 marks)
-
-
-
-
8. State the origins of the following breeds of livestock (2 marks)
- (i) Charolais
- (ii) Toggenburg
- (iii) Merino
- (iv) Landrace
9. Give **four** ways in which diseases can spread from one animal to other within the farm. (2 marks)
-
-
-
-
10. Give **four** limitations of artificial insemination in cattle breeding (2 marks)
-
-
-
-
11. State **four** functions of carbohydrate in the body of an animal (2 marks)
-
-
-
-
12. Name **two** forms of which tapeworms are found in livestock (1 mark)
-
-
13. Name **six** routine livestock rearing practices used to control parasites and diseases (3 marks)
-

.....
.....
.....
.....

14. Outline **four** factors that influence the quality of honey (2 marks)

.....
.....
.....

15. State **four** ways in which animal utilizes a production ration (2 marks)

.....
.....
.....

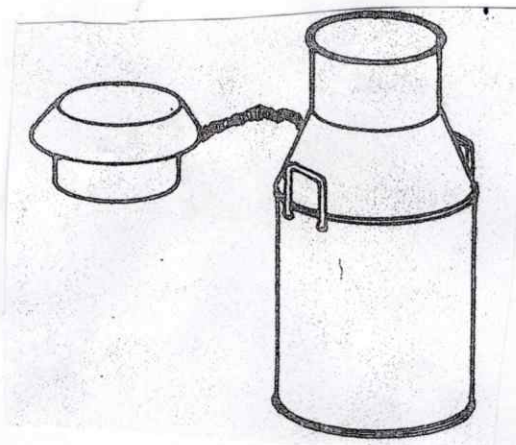
16. Mention **four** reasons for treating timber before roofing farm buildings (2 marks)

.....
.....
.....

SECTION B: (20 MARKS)

Answer ALL the questions in this section in the spaces provided.

17. Below is an illustration of a farm equipment.



a) Identify the equipment (1 mark)

.....

b) State the use of the equipment (1 mark)

.....

c) State **three** methods that can be used to sterilize the equipment (3 marks)

.....

.....

.....

18. A farmer wanted to mix 100kg of livestock feed containing 30% digestible crude protein (DCP) by using sorghum containing 12% digestible crude protein (DCP) and soya bean meal containing 37% digestible crude protein (DCP). Calculate the quantities of each feedstuff the farmer would have in the ration. (5 marks)

.....

.....

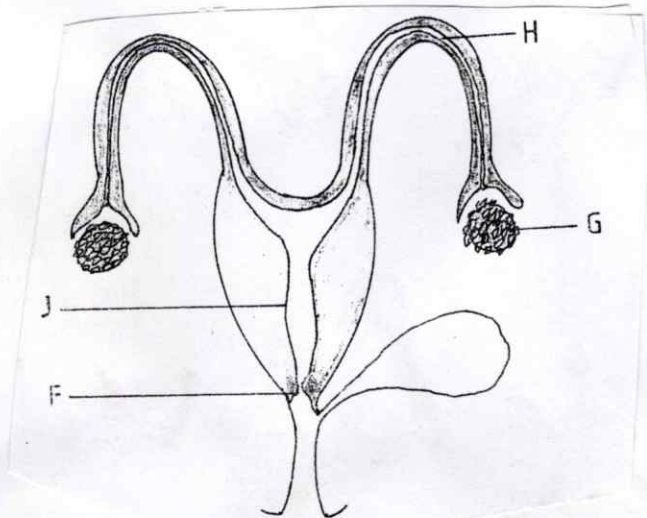
.....

.....

.....

.....

19. The diagram below shows the reproductive system of a cow. Study it carefully and answer the questions that follow.



a) Name the parts labeled F and H (2 marks)

F

H

b) Give **two** functions of the part labeled G

(2 marks)

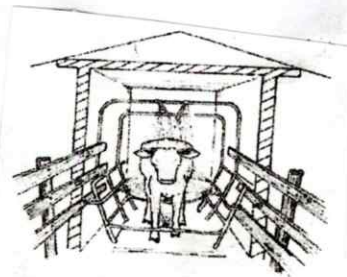
.....
.....

c) Give the role of the part labeled J

(1 mark)

.....
.....

20. The diagram below shows a farm structure. Use it to answer the questions that follow.



a) Identify the practice being carried out.

(1 mark)

.....

b) Name the structure in which the practice is being carried out.

(1 mark)

.....

c) Give **three** advantages of the structure above over a plunge dip.

(3 marks)

.....
.....
.....
.....

A series of approximately 28 horizontal dotted lines for writing.

.....
.....
.....
.....
.....
.....
.....
.....
.....
.....
.....
.....
.....
.....
.....
.....
.....
.....
.....
.....
.....
.....
.....
.....
.....
.....
.....
.....
.....
.....
.....
.....
.....
.....
.....
.....
.....
.....
.....
.....
.....
.....
.....
.....
.....
.....
.....
.....
.....
.....
.....
.....
.....
.....
.....