



# MARANDA HIGH SCHOOL

Kenya Certificate of Secondary Education  
PRE-MOCK EXAMINATIONS 2023

**443/2**

**AGRICULTURE**

**Paper 2**

**APRIL 2023–TIME: 2Hours**

Name: ..... AdmNo: .....

Class: ..... Candidate's Signature: ..... Date: .... /APRIL/2023.

## INSTRUCTIONS TO CANDIDATES

- Write your name and index number in the spaces provided above
- This paper consists of **THREE** sections A, B and C
- Answer **ALL** questions in section A and B and any two questions from section C
- All answers should be written in the spaces provided on the question paper

## FOR EXAMINER'S USE ONLY

SECTION	QUESTIONS	CANDIDATE'S SCORE
A	1 -16	
B	17- 20	
<u>C</u>	21 -23	
	TOTAL SCORE	

**SECTION A (40 MARKS)**  
Answer ALL the questions in section

1. Name **three** types of cattle. ( 1 ½ mks)

.....  
.....  
.....

2. What is the meaning of the word pre-disposing factors as used in livestock health. (1mk)

.....

3. State **five** effects of keds on sheep. (2 ½ mks)

.....  
.....  
.....  
.....  
.....

4. Distinguish between a feed and a feedstuff. (2mks)

.....  
.....  
.....  
.....

5. What is dry cow therapy ( 2mks)

.....  
.....  
.....

6. Distinguish maintenance and production ration. ( 2mks)

.....  
.....  
.....  
.....

7. What is the function of oesophageal groove. (1mk)

.....  
.....

8. Give **four** signs of parturition in pigs. (2mks)

.....  
.....  
.....  
.....

9. Give **four** functions worker bee in the hive. (2 mks)

.....  
.....  
.....  
.....

10. State **two** uses of foot bath in a cattle dip. (1 mk)

.....  
.....

11. Give **four** factors to consider in grading eggs for fresh market. (2 mks)

.....  
.....  
.....  
.....

12. List **four** tools that are used when laying concrete blocks during construction. (2mks)

.....  
.....  
.....

13. Give **four** reasons for using litter in a poultry house. ( 2 mks)

.....

.....

.....

.....

14. Discuss the feeding of fish in a fish pond. (2 ½ mks)

.....

.....

.....

.....

.....

15. List any **five** sources of power in the farm. (2 ½ mks)

.....

.....

.....

.....

.....

16. Differentiate line breeding and inbreeding. ( 2 mks)

.....

.....

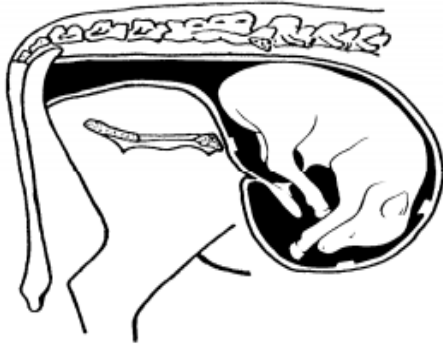
.....

visit [www.freeksepastpapers.com](http://www.freeksepastpapers.com) to access more content

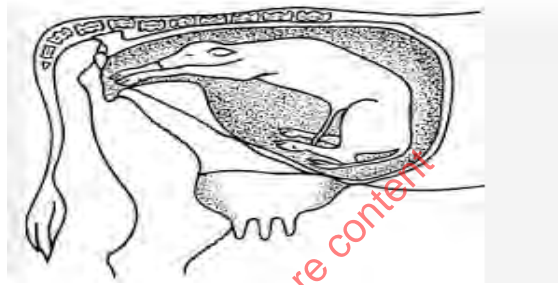
SECTION B (20 marks)

Answer ALL questions in this section in the spaces provided.

17. The diagrams below show calf presentations during parturition.



M



N

a. Name the presentation labelled

M..... (1 mk) N ..... (1 mk)

b. which one of the two presentations requires the services of a qualified stockman. (1mk)

.....

c. State **two** signs of parturition observed on the vulva. (2mks)

.....  
.....  
.....

visit [www.freeksepastpapers.com](http://www.freeksepastpapers.com) to access more content

18. The diagram below illustrates a liver infested with internal parasite



a. Identify the parasite. ( 1mk)

.....

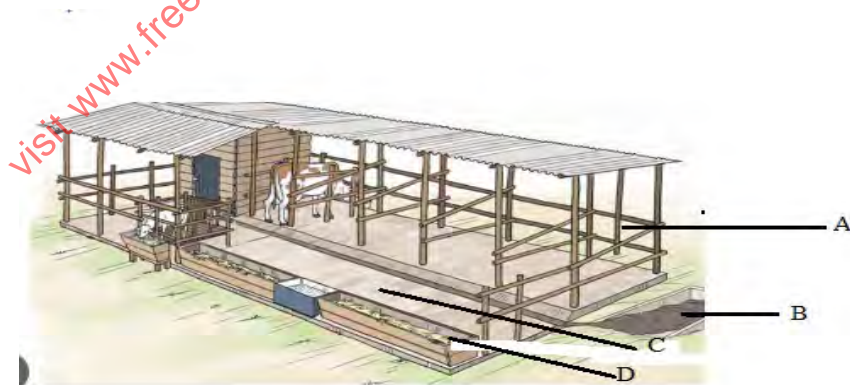
b. Name a disease that is caused by the parasite above. ( 1 mk)

.....

c. State any **three** ways of controlling the parasite. (3 mks)

.....  
.....  
.....

19. The diagram represents a zero grazing unit.



a. Name the parts labelled ( 3 mks)

A .....

B.....

D.....

b. State **two** activities that take place in the part labelled C ( 2mks)

.....  
.....

20. The diagram below represents a farm implement.



a. Identify the parts labelled.

D ..... (1mk) V ..... ( 1mk)

b. Give **three** maintenance practices to be carried out on the implement above. (3 mks)

.....  
.....  
.....

**SECTION C ( 40 MARKS)**

Answer any **TWO** questions in this section in the spaces provided.

21.a. State eight practices that come immediately after complete milking in a milking shed. (8mks)

b. Discuss pneumonia disease under the following sub headings.

i. Predisposing factors ( 4 mks)

ii. Symptoms of attack. (8 mks)

22. a. Discuss **ten** uses of a fence on the farm. (8 mks)





A series of horizontal dotted lines for writing, spanning the width of the page.

visit [www.freeksepastpapers.com](http://www.freeksepastpapers.com) to access more content



visit [www.freeksepastpapers.com](http://www.freeksepastpapers.com) to access more content