



# MASENO SCHOOL MOCK – 2022

Kenya Certificate of Secondary Education



443/2

Paper 2

## AGRICULTURE Sept. 2022 – 2 Hours

Name ..... Admission Number .....

Class ..... Date ..... Candidate's Signature.....

### Instructions to candidates

- Write your name and admission number in the spaces provided above.
- Write your class, date of examination and sign in the spaces provided above
- This paper consists of three sections: **A**, **B** and **C**
- Answer **All** questions in section **A** and **B**
- Answer **any two** questions in section **C**.
- All answers should be written in the spaces provided.
- This paper consists of **11** printed pages
- Candidates should check the question paper to ascertain that all the pages are printed as indicated and that no questions are missing.
- Candidates should answer the questions in English.

### For Examiner's Use Only

Section	Question	Maximum Score	Candidate's Score
A	1-17	30	
B	18-21	20	
C		20	
		20	
Total Score		90	

1. What is a zoonotic disease? (1mark)

.....  
.....

2. State the role of caecum in ruminants (1 mark)

.....  
.....

3. Give the meaning of the following terms as used in livestock Health.

i) Vector organisms (1mark)

.....  
.....

ii) Intermediate host (1 mark)

.....  
.....

iii) Primary host (1 mark)

.....  
.....

4. State three sources of water in the animal body. (1 ½ marks)

.....  
.....  
.....

5. What is a balance ration? ( 1 mark)

.....  
.....

6. Name the four meat breeds of sheep. (2 marks)

.....  
.....  
.....  
.....



7. Distinguish the following terms as used in cattle breeds. (1 mark)

i) Bullock and a steer

.....  
.....

ii) Heifer and a calf

.....  
.....

8. List four tools used for laying concrete blocks when constructing a wall. (2 marks)

.....  
.....  
.....

9. a) What do the following terms mean?

i) Total Digestible Nutrients (TDN) (1 mark)

.....  
.....

ii) Starch Equivalent (SE) (1 mark)

.....  
.....

iii) Digestible Crude Proteins (DCP) (1 mark)

.....  
.....

iv) Dry matter (DM) (1 mark)

.....  
.....

v) Crude Fibre (CF) (1 mark)

.....  
.....



10. Give three methods of controlling cannibalism in a flock of layers in deep litter system. (1 ½ marks)

.....  
.....  
.....

11. Give four conditions that can reduce the quality of eggs for hatching. (2 marks)

.....  
.....  
.....

12. Give three ways of stimulating milk let-down in a dairy cow. (1 ½ mark)

.....  
.....  
.....

13. Differentiate between Homogenization and Pasteurization in milk production. (2 marks)

.....  
.....  
.....

14. Explain how the power transmitted from a tractor engine is made available for use on the farm under the following sub-headings.

i) Propeller shaft (2 marks)

.....  
.....  
.....

ii) Power take off shaft (P.T.O) (2 marks)

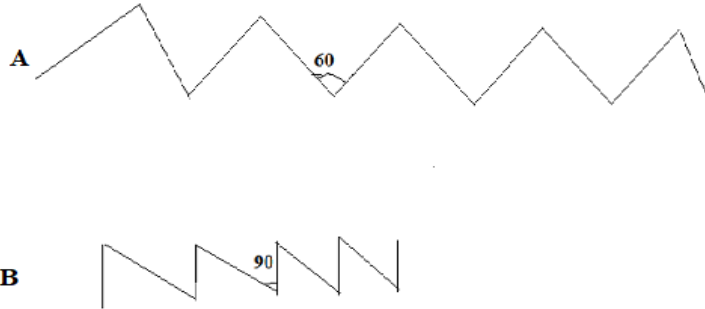
.....  
.....  
.....

15. Give one function of calcium in dairy cow. (½ mark)



**SECTION B (20 MARKS)**

16. The diagrams labeled A and B below show the teeth arrangements in hand workshop tools



a) Identify the tools represented with teeth arrangements A and B (2 marks)

A .....

B .....

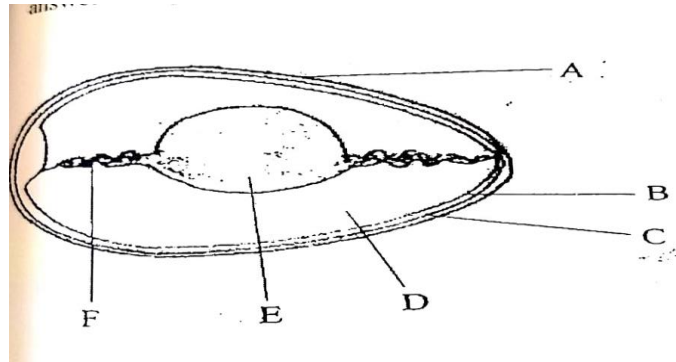
b) State one functional difference between tools represented by the teeth arrangement. (2 marks)

.....  
 .....

17. A farmer is required to prepare 200kg of dairy meal containing 18% digestible crude protein (DCP). Using the Pearson's square method calculate the quantity of sunflower seed cake (34% DCP) and maize germ (71%DCP) the farmer would require for the dairy meal. (5 marks)



18. The diagram below is an illustration of an egg. Study it carefully and answer the questions that follow.



a) Name the parts labeled B, C, D and F. (2 marks)

B.....

C.....

D.....

F.....

b) State the qualities of part labeled A that should be considered when selecting egg for incubation. (1 mark)

(1 mark)

.....

.....

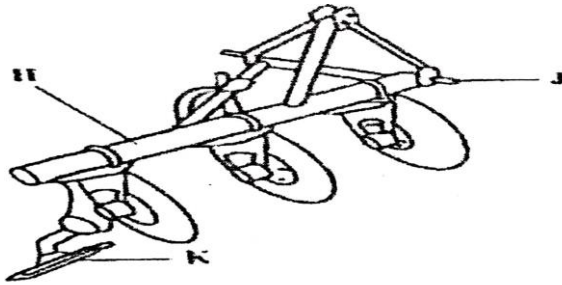
c) What is the function of the part labeled E in a fertilized egg. (1 mark)

(1 mark)

.....

.....

19. The diagram below illustrates a tractor drawn implement.



a) Identify the implement (1 mark)

.....

b) Name the part labeled (1 mark)

H .....

J .....

c) State one function of the part labelled K. (1 mark)

.....

.....

d) Explain why the implement is suitable for ploughing areas with hidden stones. (1 mark)

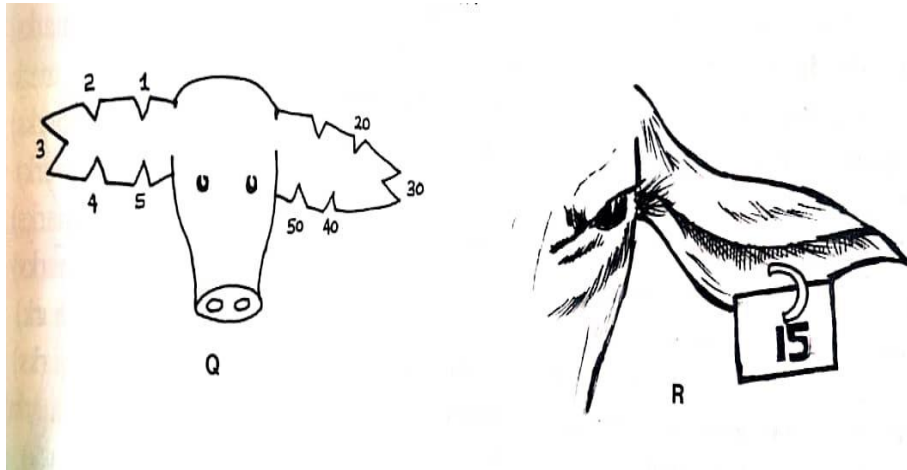
.....

.....

.....



20. The diagrams below illustrated a practice carried out on livestock. Study the diagrams and answer the questions that follow.



a) i) Identify the practice in Q and R. (½ mark)

.....

ii) Name the method carried out in Q and R. (1 mark)

.....

b) State one advantage of R or Q. (½ mark)

.....  
.....

**SECTION C:** (40 MARKS)

Answer any two questions.

21. a) Describe the different methods of collecting bull's semen. (5 marks)

.....  
.....  
.....  
.....  
.....  
.....  
.....  
.....  
.....  
.....











.....

.....

.....

.....

